

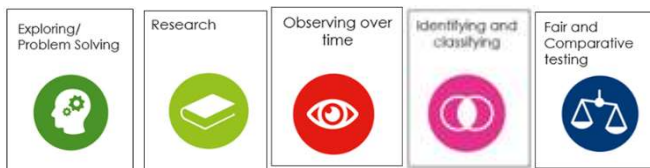
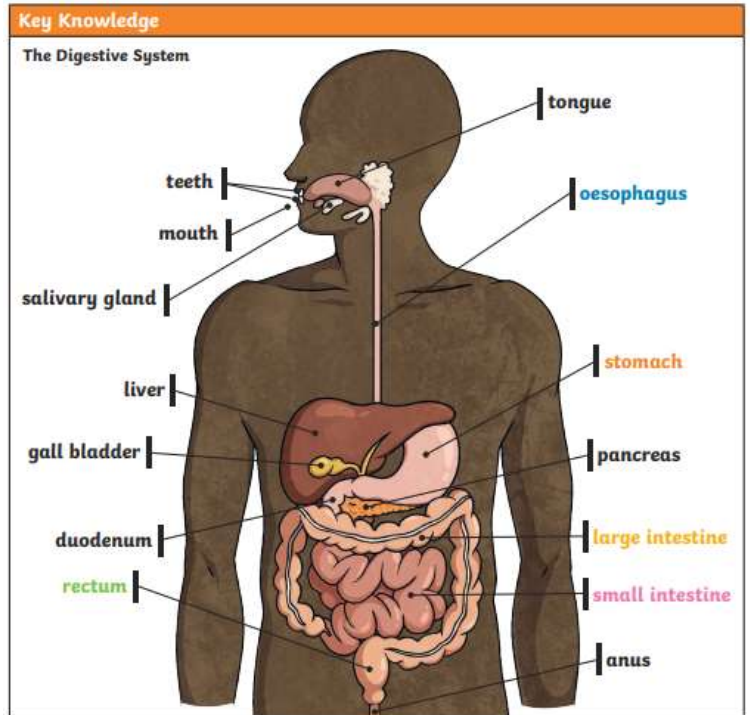
The Digestive System

digest
oesophagus
stomach
Small intestine
Large intestine
rectum

Part of the intestine where nutrients are absorbed into the body.
Part of the intestine where water is absorbed from remaining waste food. Faeces are formed.
A muscular tube which moves food from the mouth to the stomach.
Part of the digestive system where faeces are stored before leaving the body through the anus.
Break down food so it can be used by the body.
An organ in the digestive system where food is broken down with stomach acid and by being churned around.

Scientific Enquiries

1. How does the digestive system work?
2. What are the causes of tooth decay?
3. How can we care for our teeth?
4. What purpose do the different types of teeth have?
5. What is the purpose of a food chain?

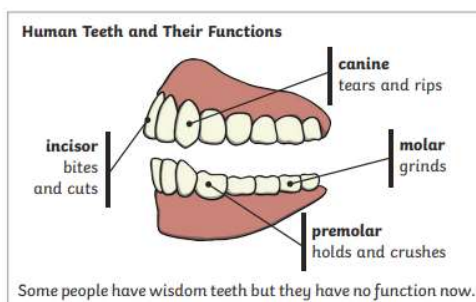


Teeth

Unit Vocabulary – Join them up with the correct definition once you have learned it,

molar
incisor
canine
Pre-molar

Rips and tears
Holds and crushes
grinds
Bites and cuts



The teeth of an animal are designed to eat different foods depending on the diet of the animal. Examples of a **herbivore**, a **carnivore** and an **omnivore** skull:

