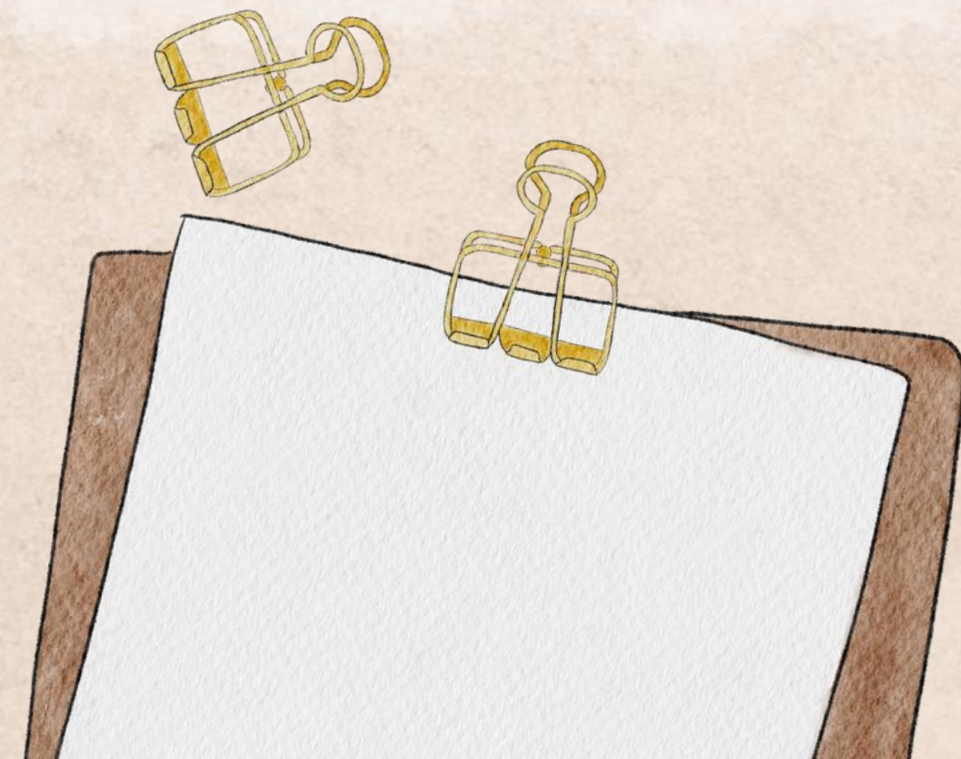
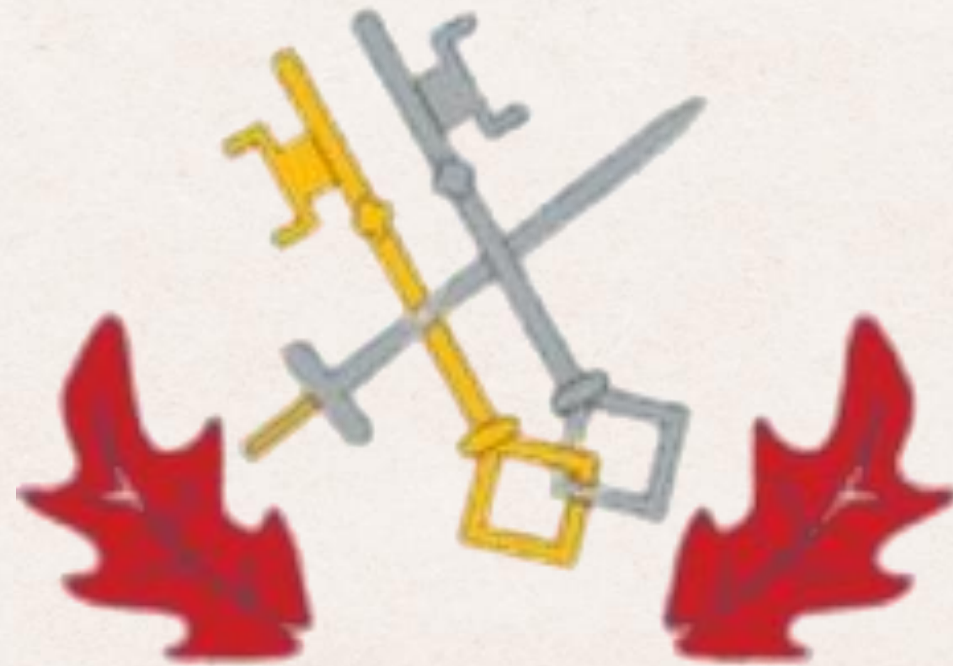


Welcome to Year 6



The Year 6 Team

6EW – Mrs Wade (Year Leader), Mr Brown (Friday Autumn 1), Miss Edmed (Friday Autumn 2 onwards) and Mrs Zech (LSA am), Mrs Doherty (LSA am), Mrs Newport (LSA pm)

6LB – Miss Brett (Class Teacher) and Miss Fyfield (LSA) and Mrs Baldock (LSA am)

6HD – Miss Dolton (Class Teacher) and Mrs Sampson (LSA am)

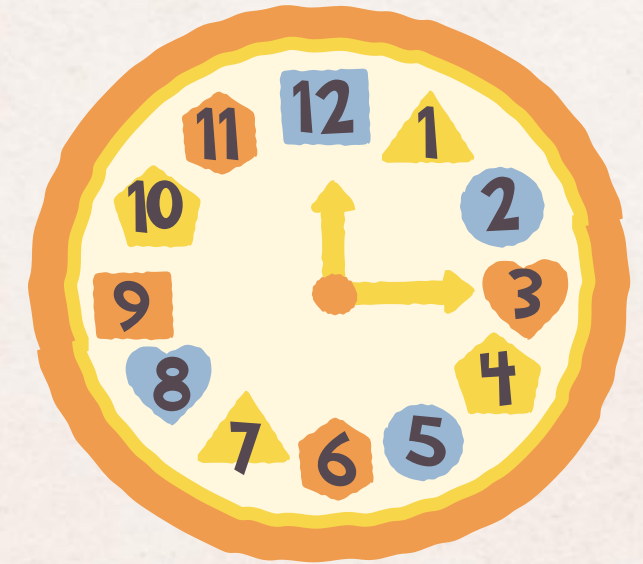
6SW – Miss Wilson (Class Teacher) and Mrs Chuter (LSA am), Mrs Pollard (LSA am)



Mr Cassim will continue to teach PE to all classes
Madame Hunt will continue to teach French
Ms Morris will teach within Year 6 also



Daily Timetable



8:20: Pupil's allowed onsite (not before)

8:30: Registration and early work in class

8.45-9.45: Lessons

9.50-10.05: Assembly

10.05- 10:20: Break (healthy snacks & no nuts, crisps, chocolate or sweets)

10.20-12.20: Lessons

12:20-1:10: Lunch

1.10-3.10: Lessons

3:10: Home time! (Pupils to be collected by 3.20pm)

Mornings at Waverley Abbey

For the safety of all children, it is crucial that children are not left unattended on the school site until 8:20am, when a member of staff will be present to open the school gate and welcome the children.

The school site is a busy place with cars driving through, and it is essential that children are under our supervision to ensure their safety.

We understand that mornings can be busy, but we kindly ask for your cooperation in ensuring that your child arrives at school after 8:20am when a member of staff is on duty.

If you need to drop your child off earlier than this time, we recommend arranging suitable supervision or for them to attend breakfast club until the school gate is opened.

Life in Year 6

Year 6 is a little different to previous year groups, as pupils are preparing for the next step in their education.

- Role models – including uniform, behaviour, school values
- Independence – being prepared, organised and responsible (P.E kit, getting home, planners, homework)
- Challenge – it is a demanding year but also an exciting one. We do our best to ensure it is enjoyable and rewarding.

A big part of Year 6, is helping pupils feel 'secondary ready' by the end of the year.

Planners

We use planners in Y6 as part of the transition process.



Children are expected to have them on their desks every day.

They are used for recording:

- Homework
 - Reading record (please encourage your child to record daily reading in the dated section)
 - Reminders
 - Notes from parents/teachers
- (replaces home contact books however they are not checked daily, so pupils need to hand them in if they have a message)



They are also a great reference tool for children in lessons and at home. Please spend some time looking through your child's planner with them.

Mobile Phones



We request that mobile phones are not brought to school however we recognise that there may be occasions where it is necessary, for instance, if a pupil walks to school unaccompanied or they are being collected by a different carer.

Should they be brought into school, all mobile phones must be handed in at the school office, unless prior permission has been granted in the case of a specific medical need.

Mobile phones should be turned off before arriving at school (i.e. in the car or at the gate if walking). At no time should pupils be using their mobile phones during the school day, including at the end of the day before leaving the school site. Mobile phones should not be used on the bus.

If a pupil breaches this policy, then the phone will be confiscated and held at the office. It will then need to be collected by a parent or carer at the end of the school day.



Winter uniform- Autumn 2 to Spring 2



Summer uniform- Summer 1 to Autumn 1

Uniform

This item belongs to:

BOYS - Winter



Plain, white shirt and school tie

School sweatshirt

Mid-grey trousers

Mid-grey shorts

Black school shoes

Plain ankle black or dark grey socks (no trainer socks)

School fleece (optional - for playtimes/ outdoor only)

BOYS - Summer



As winter, but in addition (if desired)

Plain white or school polo shirt

GIRLS - Winter



Plain white shirt and tie

Mid-grey skirt or shorts

Mid-grey tailored trousers (no legging type trousers)

School sweatshirt or cardigan

Plain grey or black ankle/knee length socks or black tights (no trainer socks)

Black school shoes

School Fleece (optional - for playtimes/ outdoor only)

Girls - Summer



As winter but in addition (if desired)

Royal Blue and white gingham/striped dress

Plain white or school polo shirt

White ankle/knee length socks

Uniform

This item belongs to:

We expect Year 6 pupils to be responsible for ensuring they meet uniform expectations as part of their preparation for secondary school.



Other reminders:

- Shirts tucked in.
- Hair tied back (boys and girls)
- Hair bands should be simple blue or black bands.
- Jewellery and nail polish should not be worn to school (apart from simple studs if ears are pierced which need to be removed for P.E/games and swimming).

If your child loses an item, please encourage them to look for it. If it is named, it will make its way back to our class.

P.E Kit

This item belongs to:

PE (Mr Cassim and teacher led) will be outside in all weathers.

The children must have:

- Plain black shorts/tracksuit bottoms
- School T-Shirt
- Plain navy/black jumper or school fleece for Winter
- Trainers
- White socks



PE kit should be in school every day and brought in on a Monday.

Please wait until the summer holidays to pierce any ears!

Swimming will begin in Spring 2 for Year 6.

Equipment

This item belongs to:

- * One reasonably sized pencil case
- * pencil
- * sharpener
- * rubber
- * 2 x blue ink pen (not biro but erasable is fine)
- * whiteboard pen
- * a selection of coloured pencils
- * 30cm ruler
- * glue
- * scissors
- * purple pen
- * protractor



Children should bring only the required items to avoid any additional distractions.

It is important that children have the correct equipment each day to ensure they do not lose any learning time gathering equipment.

This allows them to prepare further for their transition to secondary school.

Year 6 Curriculum

Autumn Term

English

The Rainforest

Non-Chronological Reports

Persuasive Writing

Macbeth

Newspapers

Diaries



Science

Living things- Classification

Electricity

Art

Rainforest Painting
inspired by John Dyer



Music

Ukulele

History

Ancient Greek Civilisation



French

Les Vetements

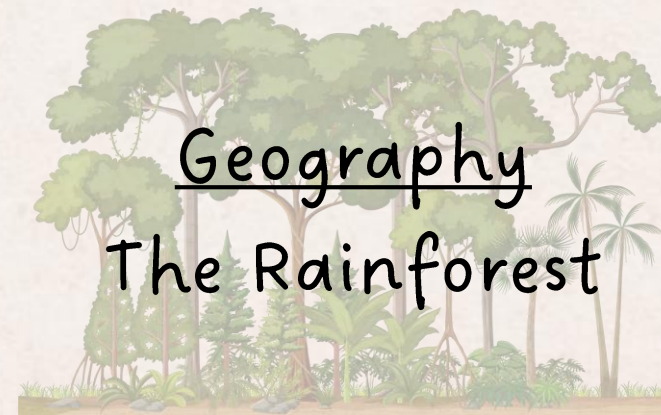
Francophone countries

D&T

Mechanical systems- Fairgrounds

Geography

The Rainforest



Maths

Place Value

Addition and Subtraction

Multiplication and Division

Fractions

Measure

Geometry

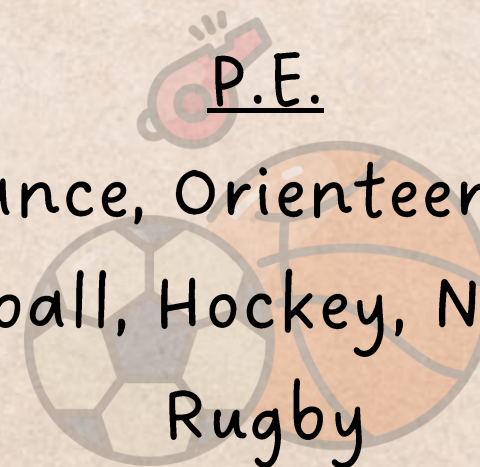
Computing

Online Safety

Introduction to Python

P.E.

Dance, Orienteering,
Football, Hockey, Netball,
Rugby



PSHE

Being Me

Celebrating Difference

R.E.

Christianity: How is God Three-and yet one?

Christianity: What do Christians believe about the Messiah?

Spring Term

English

World War 2

Newspaper recounts
The Piano- narrative
Instructional texts

Discussion texts

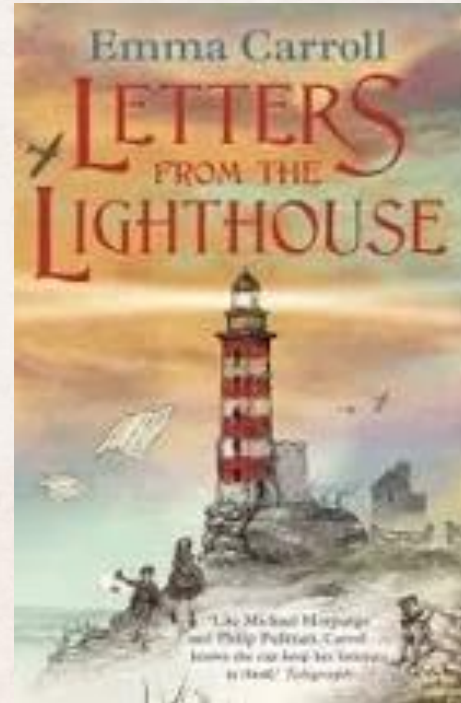
Biographies

Science

Evolution and
Inheritance

Art

Collage



Music

Composition
Jazz



R.E.

Hinduism: What helps Hindus worship?
Christianity: God's Kingdom

History

World War 2

French

Au Café

D&T

Cooking and Nutrition- Baking

Maths

Fractions

Decimals

Fractions, Decimals, Percentages
Geometry: Position and Direction

Algebra

Measure: Area, Perimeter and Volume

Statistics

Ratio

Computing

Bletchley Park

Big Data

P.E.

Gymnastics, Swimming,
Football, Hockey, Netball,
Rugby

PSHE

Dreams and Goals
Healthy Me

Summer Term

English

The Lighthouse- Narrative
The Highwayman- Narrative
Explanation Text
Revision

French

La Poesie



Geography

OS Map skills
Fieldwork

Maths

Revision
Futures

Money Matters
Investigations

Science

The Circulatory System
Light



P.E.

Swimming, Cricket,
Rounders, Sports Day,
Swimming Gala

Computing

Digimaps
Using AI

Art

Drawing and Painting

R.E.

Buddhism: What is the Buddhist way of life?
Thematic: Who am I?

Music

Production

PSHE

Dreams and Goals
Healthy Me

SATs

Monday 11th May - Thursday 14th May
2026

Monday 11th May- Grammar Paper (SPaG) and Spelling Paper

Tuesday 12th May- Reading Paper

Wednesday 13th May- Maths Arithmetic and Reasoning Paper 1

Thursday 14th May- Maths Reasoning Paper 2

Writing evidence is gathered through the year by teachers and moderated with other schools - handwriting and spelling are important here.

Home Learning

We are supporting pupils in becoming 'secondary ready'.

Subject	Homework set on:	Due in:
English	Monday	Wednesday
Maths	Thursday	Monday
Times Tables	Monday	Friday
Reading	Daily (must be recorded)	



Children should continue daily reading and recording this. It is important that pupils at this age also continue reading aloud to adults at home. (Please encourage your child to take part in the reading challenge).
If needed, children are able to go to homework club daily.

Year 6 Responsibilities

In September you will have the opportunity to apply for a range of responsibilities across different areas of school life. Some will be familiar, but others are special Year 6 responsibilities.

You may apply for more than one, however think carefully about the skills you have and how you can fulfil the role.

Always keep an eye on the Year 6 notice board for information about these roles.

Tech Team House Captains Lead Buddy

Play Leaders Sports Leaders

WA Challenge Team Leaders School Ambassador

Librarians

You will also have the opportunity to apply for the following whole school responsibilities:

School Council

Faith Group

Eco Council

Responsibility	How to apply	Deadline
Tech Team	Write a letter to Mrs Marshall explaining why this role would be best suited to you.	Friday 12 th September 2025
Waverley Abbey Challenge Team Leader	More information in September	More information in September
House Captains	Complete an application form and return to Mr Brown via your Y6 class teacher	Friday 12 th September 2025
Sports Leaders	More information in Autumn term	More information in Autumn
Lead Buddy	Speak to your Y6 class teacher in September	Friday 3 rd October 2025
School Ambassador	Write a letter to Mrs Wade explaining why you feel this role is right for you and what you can bring to the role.	Friday 12 th September 2025

Upcoming Dates- Parents and Carers

TBC (1st, 2nd or 3rd week in October)- Year 6 residential to Portland Outdoor Centre Parent Meeting

Tuesday 11th December 2.30pm- Fairground showcase in Y6 classrooms

Thursday 5th February 2.30pm - Y6 sharing of learning in hall

Thursday 2nd July 6pm (TBC)- Waverley Abbey Challenge celebration evening

Tuesday 7th & Wednesday 8th July 6pm (TBC)- Y6 Production

Friday 17th July 12.45am- Y6 Leavers' assembly

Please note- dates and times are subject to change

Upcoming Dates- Pupils

Tuesday 23rd September- Kew Gardens- Rainforest trip

Friday 7th November (in school)- Year 6 Greek workshops (in school)

Wednesday 19th November (in school)- Year 6 Shakespeare workshop (in school)

TBC- World War 2 Experience Day (dress up)- Rural Life Centre, Tilford

Monday 11th -Thursday 45th May- SATs week

TBC - Local Fieldwork Walks

Thursday 18th June- Year 6 Leaver's Assembly- Guildford Cathedral

Monday 22nd June - Friday 26th June 2026- Portland Outdoor Centre residential

Tuesday 7th & Wednesday 8th July 6pm- Y6 Production

TBC- Y6 Leavers' Party

Friday 17th July 12.45pm- Y6 Leavers' assembly

Please note- dates and times are subject to change

Year 6 Residential

Portland Outdoor Centre

Monday 22nd June to Friday 26th June 2026

Residential meeting- October- date TBC

Deposit and sign up deadline- TBC Full details will be sent prior to the meeting

Cost TBC

Please speak to Mrs Marshall if you have any queries over costings



portland
outdoor centre

The residential will be a mixture of both land and water activities, and includes evening activities also.

Overview of trips and events

Term	Trip/Event	Date	Approximate cost
Autumn 1	Kew Gardens- Rainforest trip	Tuesday 23rd September 2025 (Returning to school 4pm)	£23
Autumn 2	Greek Workshop Shakespeare workshop	Friday 7th November 2025 Wednesday 19th November 2025	TBC
Spring 1	World War 2 Experience- Rural Life Centre	Date TBC	TBC depending on transport
Spring 2			
Summer 1	Local Area field work (Hankley/Frensham Common)	May/June 2025 TBC Each class will visit on a different day	No cost- volunteers needed
Summer 2	Residential- Portland Production Leavers' Party Leavers' service Cathedral	Monday 22nd June - Friday 26th June 2026 Tuesday 7th and Wednesday 8th July 6pm TBC Thursday 18th June 2026	TBC TBC- Ticket costs TBC Approx. £7 - £10 transport

Bikeability

You will have the opportunity to sign your child up to a Surrey County Council run Bikeability course in the summer term.

This will comprise of 5x 1.5 hour sessions across the week.

Most of the sessions will be offsite, cycling along the road into Tilford and around the green.

Sessions delivered and supported by SCC.

There is a small charge. More information will be sent out later in the year.

Enrichment- Waverley Abbey Citizen

Over the year all Year 6 children will be taught essential skills for life beyond the classroom:

- Online safety (taking a lead on safer internet day)
- Basic First Aid
- Phoning 999
- Countryside Code
- Map reading

If your child would like a further challenge...

Waverley Abbey Challenge

The 5 Elements

The Waverley Abbey Challenge is open to all Year Six pupils and is uniquely designed to develop skills for life and preparation for the next stage of education. Achieving the award isn't a competition: it's all about setting personal challenges and pushing personal boundaries.

Through participating in the Waverley Abbey Challenge, the children will have fun, make new friends, improve their self-esteem and build confidence. They will gain essential skills and attributes for secondary school and beyond such as resilience, problem-solving, team-working, communication and drive.

- 1) Physical Activity- 30 hours
- 2) Community- 15 hours work in/for the community
- 3) Life Skills- complete given list throughout the year
- 4) Expedition- plan and complete a 10 mile family walk
- 5) Environmental Awareness- Flora and Fauna challenges

Waverley Abbey Challenge

All pupils that complete an element within the given timeframe will receive a certificate for that element.

At the end of the year, those who complete the challenge will receive their award in a special celebration evening.

Pupils will need to be self-motivated and organised to ensure they meet each element. They will be given deadlines and reminders, however it is up to themselves to hand in their booklet to be signed off once an element is complete.

Please discuss the challenge with your child and encourage them to think about whether they feel up for it. We would love as many as possible to take part. You can then sign them up via Scopay and they can then collect their book from Mrs Wade.

The cost to enter the challenge is £5- payable via ScoPay. There is an opportunity for pupils to 'pay back' the sign up fee to parents.

Waverley Abbey Challenge



Last year's awards were presented by Councillor George Murray and Mrs Jacoba Murray, Mayor and Mayoress of Farnham.

Celebration Evening

Volunteering

We are always happy to welcome parent and carer volunteers into classes!

Anyone looking to volunteer on a regular basis will need to provide two references and obtain a DBS check – speak to the office if you are interested then let your class teacher know when you are ready to come in.



- We would love some help with the following:
- Kew Gardens
 - Walking to Church- Christmas & end of year
 - WA Challenge presentations DBS essential
 - Fieldwork walks (May/June) DBS preferable
 - Portland residential (June) DBS essential



If you would like to support in any other way (e.g. 1:1 reading), please let us know.

Coming Soon...



Reading Cafe

We will be looking for volunteers from each class.

More information will be sent out soon.

Communication

If you have any questions or concerns in the future, please do not hesitate to contact your child's class teacher via the office at *info@waverley-abbey.surrey.sch.uk*.

Class teachers are on the playgrounds at pick up time daily, so any quick questions can be asked then, however due to supervision needs, teachers will not be able to have in-depth discussions at this time.

If you would like to arrange a meeting, please do so via the office at *info@waverley-abbey.surrey.sch.uk*.

It is always best to discuss any questions or problems when they arise in order to solve it as quick as possible.